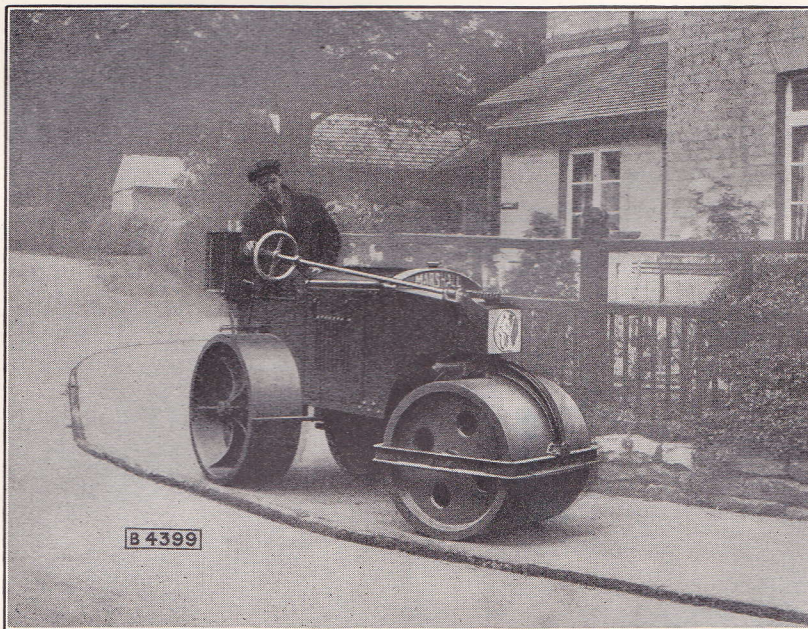


# MARSHALL MOTOR ROLLERS

FOR  
FOOTPATHS, GRASS and LIGHT ROAD WORK.



**MARSHALL, SONS & COMPANY**  
(SUCCESSORS LTD.)

Phone :  
280.

**BRITANNIA IRONWORKS,  
GAINSBOROUGH.**

Telegrams :  
MARSHALLS.

---

London Office : BRETENHAM HOUSE, LANCASTER PLACE, STRAND, W.C.2.

Indian Branches: Calcutta, Bombay, Madras, Cawnpore, Karachi, Lahore and Rangoon.

Illustrations must be considered as general representations. We reserve the right to modify details according to improved practice. M.S. & Co.



# MARSHALL MOTOR ROLLER

## A ROLLER OF DISTINCTION.

The light motor roller shown in the accompanying illustrations has been developed primarily for the construction or maintenance of footpaths and side walks, and for parks, recreation grounds, aerodromes, etc.

It can be operated easily close up to a wall or fence, or to kerbs, channels or grass verges, to which purpose its compact design lends itself.

All the controls are arranged for ease of operation and access. Reversing is effected by two inverted Ferodo-lined clutches operated by a hand lever on the left hand side of the driver. This device obviates the necessity of disengaging any gears in reversing the roller, and reduces to a minimum any tendency to "dwell" when the direction of travel is changed.

You are cordially invited to obtain prices and particulars of this roller—the latest "Marshall" contribution to Road-making Machinery—backed by over forty years' experience in road roller design and manufacture, and nearly a century of engineering service.

**REVERSING GEAR.** The diagram opposite shows the double cone clutches which enable reversal to be carried out by the simple operation of one lever, ensuring minimum dwell and absolute safety on gradients.

## LEADING FEATURES.

**ALL-GEAR DRIVE.**—No chains in transmission or steerage.

**QUICK REVERSE CLUTCHES.**—Enabling roller to be reversed quickly without changing any gears.

**HIGHLY FLEXIBLE PETROL POWER UNIT.**

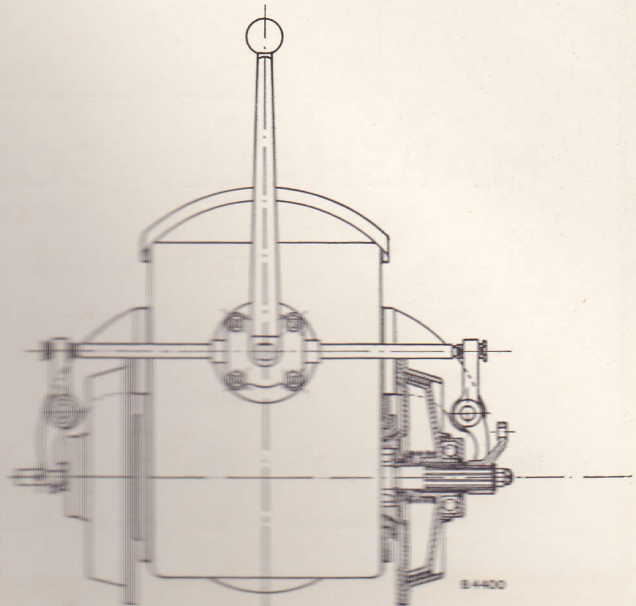
**TWO ROLLING GEARS IN EACH DIRECTION.**

**AMPLE OVERLAP BETWEEN FRONT AND REAR ROLLS.**

**CAN BE OPERATED RIGHT UP TO WALL OR FENCE.**

**ACCURATE DISTRIBUTION OF WEIGHT and perfect balance.**

**ACCESSIBILITY** for cleaning and attention.



**FULL RANGE OF DIESEL, PETROL & STEAM ROLLERS AVAILABLE**



## ADDITIONAL EQUIPMENT.

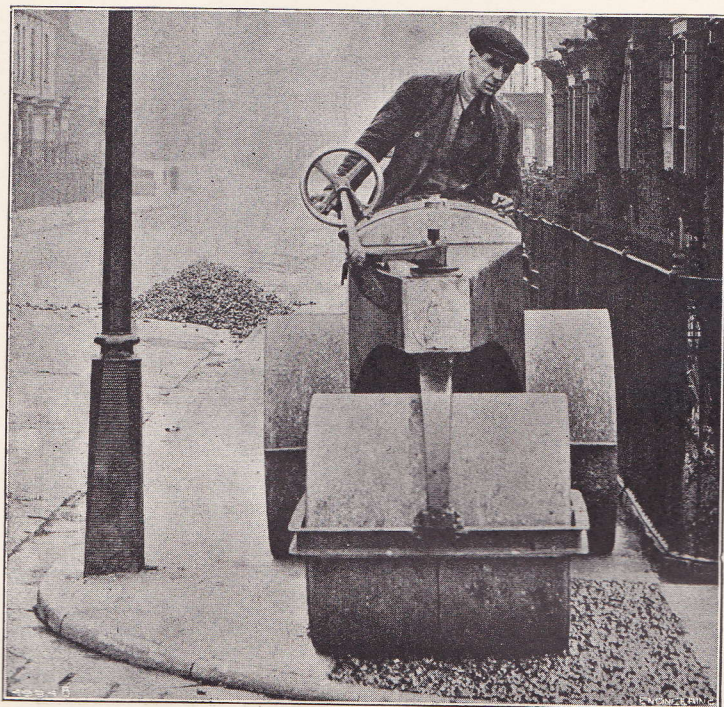
**WIDE HIND ROLLS.**—Hind rolls 24 inches wide, for grass rolling, giving a rolling width of 6 ft.

**WATER SPRAYS.**—Can be fitted in which case a 15 gallon tank is provided, giving a gravity feed to the sprays.

**BELT PULLEY.**—Can be fitted to drive auxiliary machinery. This pulley can be run in either direction and put out of gear when the roller is travelling.

**AWNING.**—Suitable awning can be fitted, when desired, to afford complete protection for the driver.

**SIDE CURTAINS.**—Waterproof side curtains can be supplied to attach to the awning.



## BRIEF SPECIFICATION.

**ENGINE.**—Four-cylinder petrol engine developing 12.8 b.h.p. at 1000 r.p.m. with a fan-cooled vertical tubular radiator. Alternatively a two-cylinder diesel engine developing  $12\frac{1}{2}$  b.h.p. at 1000 r.p.m. can be fitted at a slight extra charge.

**TRANSMISSION.**—From engine to totally enclosed oil bath gear box, and then by spur gear pinion and ring through differential to rear wheels.

**SPEEDS.**—Approximately 1.8 and 3.7 m.p.h. both forward and reverse, when the engine is running at 1000 r.p.m.

**REVERSING MECHANISM.**—Two hand-controlled friction clutches giving instantaneous reverse.

**STEERING.**—By handwheel, through machine-cut worm and quadrant, to front axle.

**BRAKES.**—Foot operated brake of internal expanding type, and hand-operated brake acting directly on the rear rolls.

**SCRAPERS.**—Renewable scrapers back and front to all rolls.

**DRAWBAR.**—Fitted to the rear of machine.

**LUBRICATION.**—By means of high-pressure grease gun.

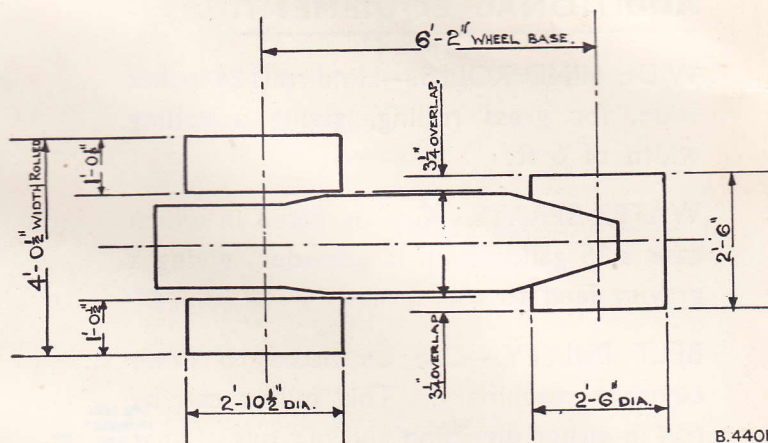
**FRAME.**—Box section of steel and heavy construction.

**A SPECIALISED JOB  
THROUGHOUT.**



THERE IS A MARSHALL ROLLER FOR EVERY PURPOSE

# The Marshall Light Motor Roller



Plan View Showing Rolling Width.

THE ACME OF MECHANICAL PERFECTION.

## GENERAL DIMENSIONS

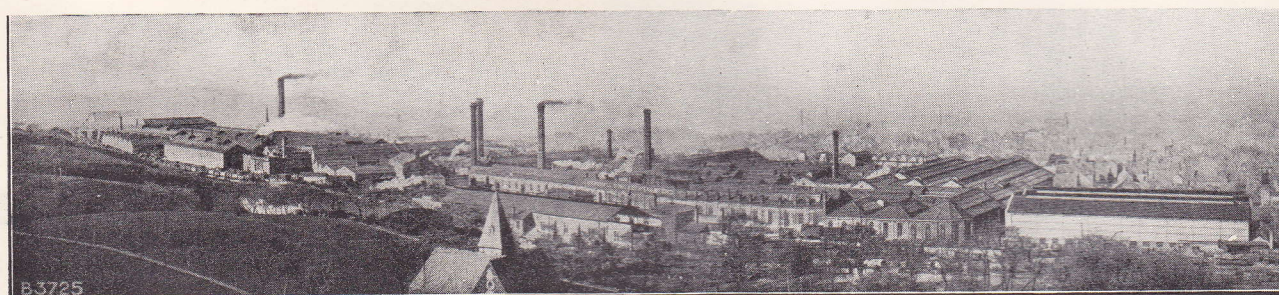
**TWO SIZES  
ONLY**

**2 and 2½**

**Tons  
Weight**

|   |     |     |     |     |     |     |            |
|---|-----|-----|-----|-----|-----|-----|------------|
| Diameter of hind rolls                    | ... | ... | ... | ... | ... | ... | 2' 10 1/2" |
| Width of hind rolls                       | ... | ... | ... | ... | ... | ... | 1' 0 1/2"  |
| Diameter of front rolls                   | ... | ... | ... | ... | ... | ... | 2' 6"      |
| Width of front rolls (total)              | ... | ... | ... | ... | ... | ... | 2' 6"      |
| Total width rolled                        | ... | ... | ... | ... | ... | ... | 4' 0 1/2"  |
| Overlap of rolls (each side)              | ... | ... | ... | ... | ... | ... | 3 1/4"     |
| Wheelbase                                 | ... | ... | ... | ... | ... | ... | 6' 2"      |
| Overall length                            | ... | ... | ... | ... | ... | ... | 9' 10"     |
| Capacity of fuel tank                     | ... | ... | ... | ... | ... | ... | 5 galls.   |
| Capacity of water tank for sprays (extra) | ... | ... | ... | ... | ... | ... | 15 "       |
| Engine B.H.P.                             | ... | ... | ... | ... | ... | ... | 12.8       |
| Engine R.P.M.                             | ... | ... | ... | ... | ... | ... | 1,000      |

For particulars of our full range of Diesel-engined Rollers, as made in sizes from 3½ tons upwards, see separate publication.



**MARSHALL, SONS & COMPANY (SUCCESSORS LTD). GAINSBOROUGH**



**MARSHALL, SONS AND COMPANY (Successors) LTD.****ENGINEERS.**

N.B.—ALL DATES FOR DELIVERY ARE GIVEN SUBJECT TO A REASONABLE EXTENSION OF TIME TO BE ALLOWED IN CASES OF STRIKES, LOCK-OUTS OR OTHER CIRCUMSTANCES BEYOND OUR CONTROL.

All communications to be addressed to the Company and not to individuals.

**Britannia Iron Works,  
GAINSBOROUGH,  
ENGLAND.**

Dear Sirs,

In directing your attention to the machinery we manufacture for Municipal and Road Contractors' service, we trust the enclosed publication dealing with the latest range of Marshall Diesel Rollers may prove of interest.

We are also sending you brochure illustrating and describing the small Motor Rollers for footpath and light road work, and would point out that while reference in this publication is only made to petrol power unit, we can fit a 2 or 4 stroke Diesel Engine. It will therefore be understood that we offer a complete range of Rollers from 2 to 20 tons suitable for every conceivable purpose, and powered to suit individual requirements.

Fully appreciating the fact that many Officials and Contractors still have a preference for Steam Rollers, we are maintaining in production our range of Class "S" Steam Rollers (See Catalogue 2380), and these are available in sizes from 6 to 20 tons.

The New Marshall 12/20 All-British Diesel Tractor has a wide application for municipal service, and is being successfully employed for hauling gang rollers, gang mowers, tar spraying plant, chip boxes and other appliances. Its sturdy construction, simplicity in operation and remarkably low running costs make a strong appeal, and further details are contained in the folder herewith.

With the modern equipment now available, providing easy starting, simple handling and low running costs and maintenance charges, many Councils are buying their own Rollers in preference to hire, and there is no doubt that considerable economy can be effected in this way, apart from the convenience of always having your own machinery exactly where you want to use it.

We cordially invite your enquiries for any machinery as outlined herein, and assuring you of our close attention to your requirements.

Yours faithfully,

MARSHALL, SONS AND COMPANY (SUCCESSORS) LTD.

*C. C. Nichol*

SALES MANAGER