



# **PARKER** *3 star mixers*

- ★ **A FINE RANGE OF FINE MIXERS**
- ★ **AFTER SALES SERVICE SECOND TO NONE**
- ★ **PROVED PERFORMANCE FOR OVER 40 YEARS**



# **'LITTLE GIANT' MIXERS**

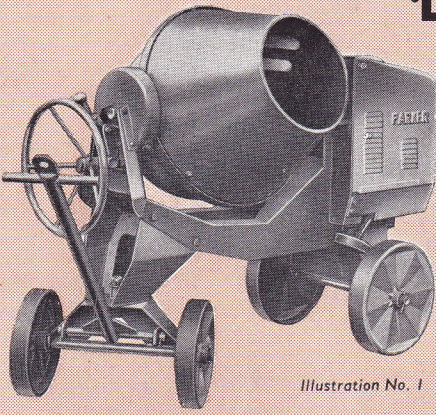


Illustration No. 1

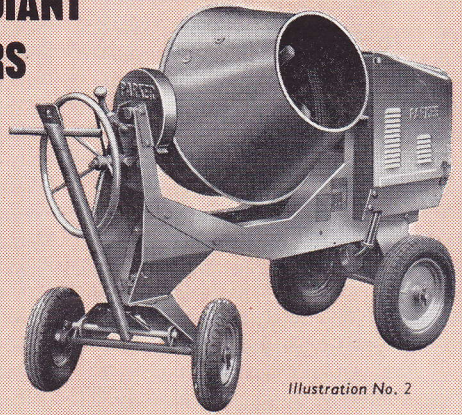


Illustration No. 2

**'Little Giant'. Model 3 1/2 T.**  
Capacity 5/3 1/2 cubic feet.  
Four metal wheels. Side discharge.  
Choice between 1 1/2 h.p. petrol or  
diesel engine, or electric motor.  
Swivelling forecarriage and drawbar.  
Model 5G with 7/5 cubic feet capacity  
also available.

**'Little Giant'. Model 3 1/2 T.**  
Capacity 5/3 1/2 cubic feet.  
Four pneumatic-tyred or solid  
rubber-tyred wheels. Side discharge.  
Choice between 1 1/2 h.p. petrol or  
diesel engine, or electric motor.  
Swivelling forecarriage and drawbar.  
Model 5G also available on pneumatic  
rubber-tyred wheels.



## **A FINE RANGE OF FINE MIXERS**

**'Little Giant'. Model 3 1/2 T.**  
Capacity 5/3 1/2 cubic feet.  
Two metal wheels. Side discharge.  
Tubular drawbar which slides into  
frame.  
Choice between 1 1/2 h.p. petrol or  
diesel engine, or electric motor.

**'Little Giant'. Model 3 1/2 T.**  
Capacity 5/3 1/2 cubic feet.  
Two pneumatic-tyred wheels.  
Side discharge.  
Tubular drawbar which slides into  
frame.  
Choice between 1 1/2 h.p. petrol or  
diesel engine, or electric motor.

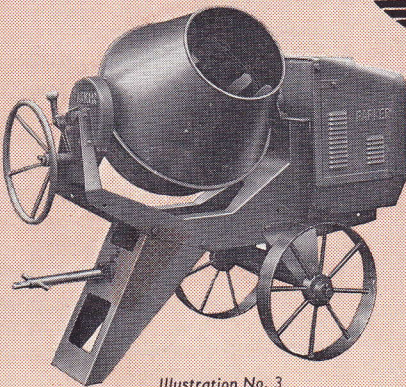


Illustration No. 3

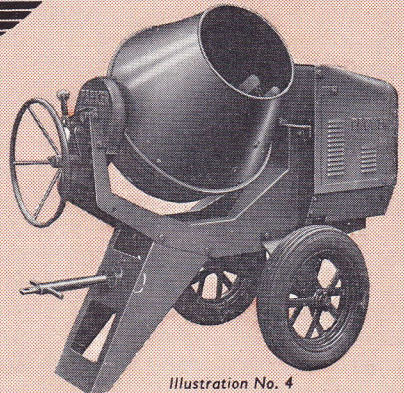
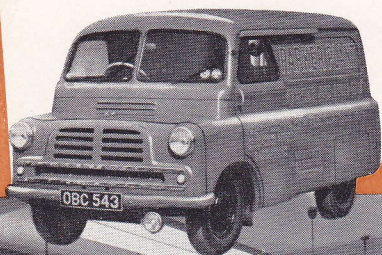


Illustration No. 4



# ★ A SERVICE THAT MEANS SOMETHING *to you*



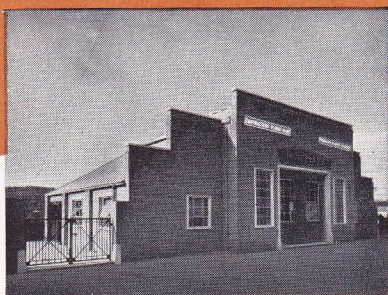
We like to keep in touch with the mixers we make. We want to help every Parker user to keep his machine in first-class condition. At a chain of Service Depots throughout the country, skilled mechanics are available for servicing Parker machines both on building sites and in the Depot. Large stocks of spares are always maintained. When you buy a Parker mixer, you are investing in a first class machine . . . and a first class after-sales service.

Main Leicester  
Service Office



London Depot

Leeds Depot



Cardiff Depot

Sedgley (Staffs.)  
Depot

**TYPICAL**

**EXAMPLES OF PARKER SERVICE**

**DEPOTS**



**THE THREE-STAR MIXERS — FINE MACHINES — SECOND-TO-NONE SERVICE—  
WONDERFUL REPUTATION**





# *Proved Performance for over 40 years*

Sold to me in 1934 ... can still be relied upon to do a good  
days work. A.F.W. Sussex

We have all PARKER mixers here and the 'family' gives real  
performance. W. Bros. of Brecon

I wish to purchase another of those wonderful mixers.  
D.G. Llanelly

'Little Giant' - best in its field. C.B.J.

In very good condition thanks to the way you make your mixers  
H.W.G. Yarmouth

Most satisfactory - more than fulfils its claims.  
H. & H. Corby

What a grand machine it is. G.W.M. Middlesbrough

Bought 1937 - still going strong. J.A.W. Mansfield

Parker mixers have built up a wonderful reputation for proved performance. It is a continual pleasure to receive letters from users expressing their satisfaction ... letters from long-standing customers telling of years of trouble-free service ... letters from new customers expressing delight with the capabilities and performance of their new machine. Proved performance is your finest guarantee.



# 'LITTLE GIANT' MIXERS

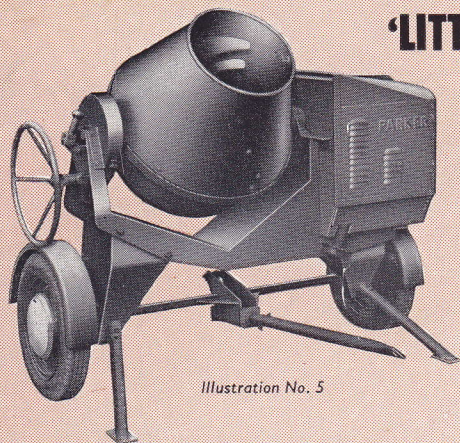


Illustration No. 5

Mixers on four wheels or two . . . on metal wheels or rubber tyres . . . with petrol engine, diesel engine, or electric motor. Whichever model you choose from this wide range, you will get a fine machine with 40 years of proved performance behind it.

Compact Model of 'Little Giant'. Capacity 5/3 1/2 cubic feet.

Two metal or pneumatic-tyred wheels. Side discharge.

Very compact and handy for sites which are rough, wet, or limited in space.

Same all-steel and transmission features of standard model.

Tubular drawbar which slides into frame.

Driven by 1 1/2 h.p. petrol engine only.

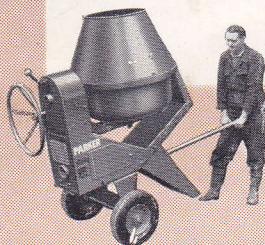


Illustration No. 8

'Little Giant'. Model 3 1/2 T. Capacity 5 3/2 cubic feet. End discharge.

Fast trailing model with large diameter rubber-tyred car wheels with mudguards.

Fitted with brakes which automatically operate when overrun, or when towing vehicle pulls up.

Removable towbar. Two jacking legs give firm four-point working base.

Choice between 1 1/2 h.p. petrol or diesel engine, or electric motor.

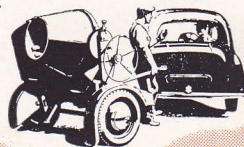


Illustration No. 6

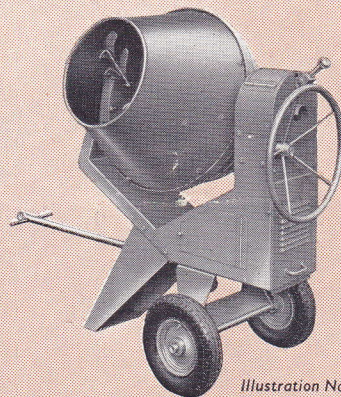


Illustration No. 7

'Little Giant' features include jockey-tensioned roller chain with machine-cut sprockets . . . quick-mix drum with all-steel pan and removable gear ring . . . light, quick tilting through deep-toothed gears . . . tapered roller bearings for centre column shaft and main drive shaft.

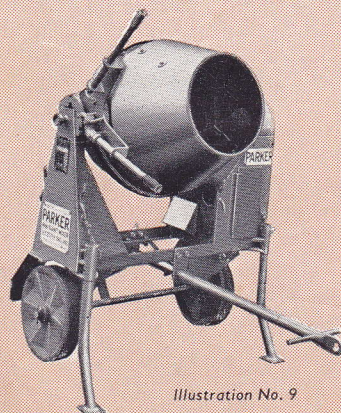


Illustration No. 9

'Mini-Giant'. Model 2T. Capacity 3/2 cubic feet. End discharge.

Two metal or pneumatic-tyred wheels.

Fast trailing model available with overrun type brakes.

Light and compact, yet exceptionally strong.

Removable towbar. Two jacking legs give firm four-point working base.

Choice between 1 h.p. petrol engine, or electric motor.

Illustration No. 10

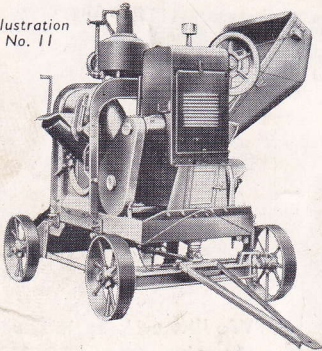


## 'MINI-GIANT' MIXERS



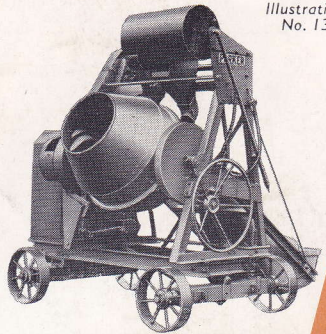
# OTHER PARKER MIXERS AND PLANT

Illustration  
No. 11



The 'Non-Tilt' concrete mixer is made in 10/7 and 14/10 cubic feet batch capacities. Available on steel or pneumatic rubber-tyred wheels. Fast-towing model available with 10/7 cubic feet capacity.

Illustration  
No. 13



The 'Speedia' concrete mixer has semi-automatic control and synchronized feed of water and aggregate. Made in sizes 7/5, 10/7 and 14/10 cubic feet batch capacities. Available on steel or pneumatic rubber-tyred wheels.



Illustration No. 12

The 'Overoll' pan mixer produces a fine, rich, smooth, fatty mortar. A special feature is the over-head drive. Pan diameters of 4 ft. 6 in. and 5 ft. 6 in. available. Obtainable on steel or pneumatic rubber-tyred wheels.

## Portable BRICK BREAKER

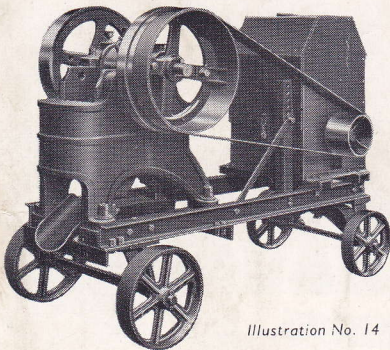


Illustration No. 14

Old bricks, concrete and general building debris can be crushed down to valuable concrete aggregate by a Parker brick breaker. Two jaw sizes are available: 8" x 5" to give 3 tons an hour, and 12" x 7" to give 5-6 tons an hour. Available as fixed machines, or as portable units mounted on four steel wheels with engine (as shown in illustration).

## Portable BELT LOADER



Illustration No. 15

This light and efficient loader handles bulk materials, including sand, gravel, concrete, stone, coal and coke. Boom lengths 20 ft. or 30 ft. with discharge heights adjustable from almost horizontal up to 8 ft. 3 ins. and 12 ft. 3 ins. respectively. Belt widths 16 ins. or 20 ins. Easily transported on two rubber-tyred wheels. Optional extras include swivelling wheels, cleated belt, barge boards and feed hopper.

## FREDERICK PARKER LIMITED

VIADUCT WORKS, CATHERINE STREET (EXT), LEICESTER, ENGLAND

Telephone: Leicester 62531 (7 lines) Telegrams: Crushing 'Phone, Leicester

LONDON OFFICE: Stafford House, Norfolk St., Strand, W.C.2 Telephone: Temple Bar 4239 and 2739

Also at DUBLIN and TORONTO