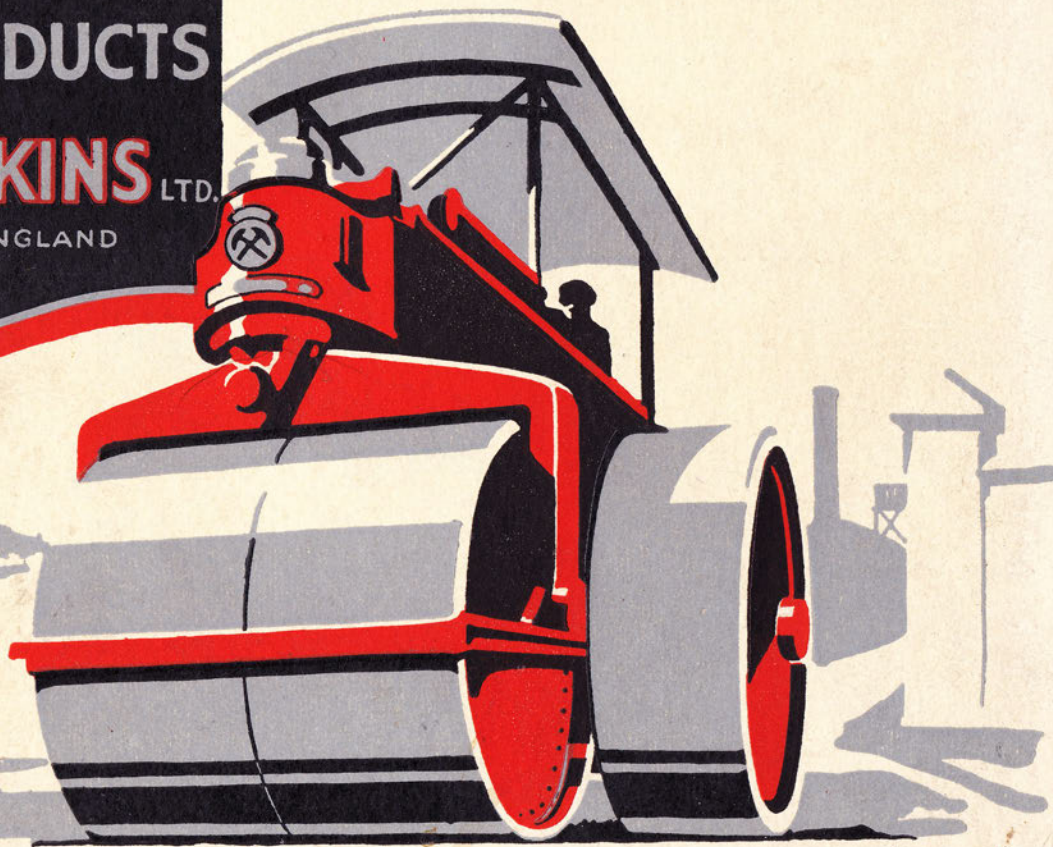


The
WORKS AND PRODUCTS
of
BARFORD & PERKINS LTD.

PETERBOROUGH

ENGLAND



Barford & Perkins, Ltd.

The Originators of the Motor Roller.

ESTABLISHED 1840.

First Motor Roller produced in 1904
and exhibited at the Show of The
Royal Agricultural Society in 1905.

Joined Agricultural and General Engineers, Ltd., in 1921.

BARFORD & PERKINS, Ltd.,
Peterborough : : England.



Telephone :— Peterborough 728/9.
Telegrams : Barfords, Peterborough.

THE most convincing proof of the superiority of our rollers is the fact that our business has expanded so rapidly in recent years that, after investigation, we find we are now the largest manufacturers in the world of internal combustion engined rollers. We have a more complete range than any other firm. Thousands of our rollers are in use the world over, and 90 per cent. of the motor rollers at work in Great Britain are of our manufacture.

This booklet is meant to serve as a souvenir for those who have been to visit us and as an invitation to those friends, particularly from abroad, whom we are hoping to welcome at Peterborough.

BARFORD & PERKINS, Ltd.,
PETERBOROUGH.



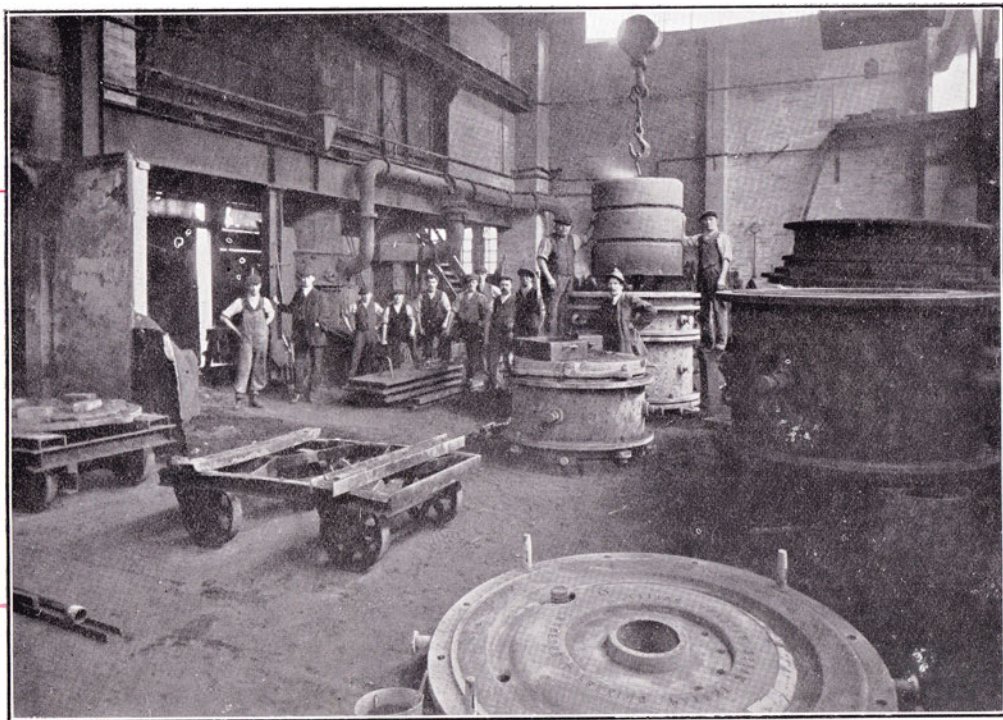


*Designing
Office.*



*One of
Three
Bays in
Foundry.*

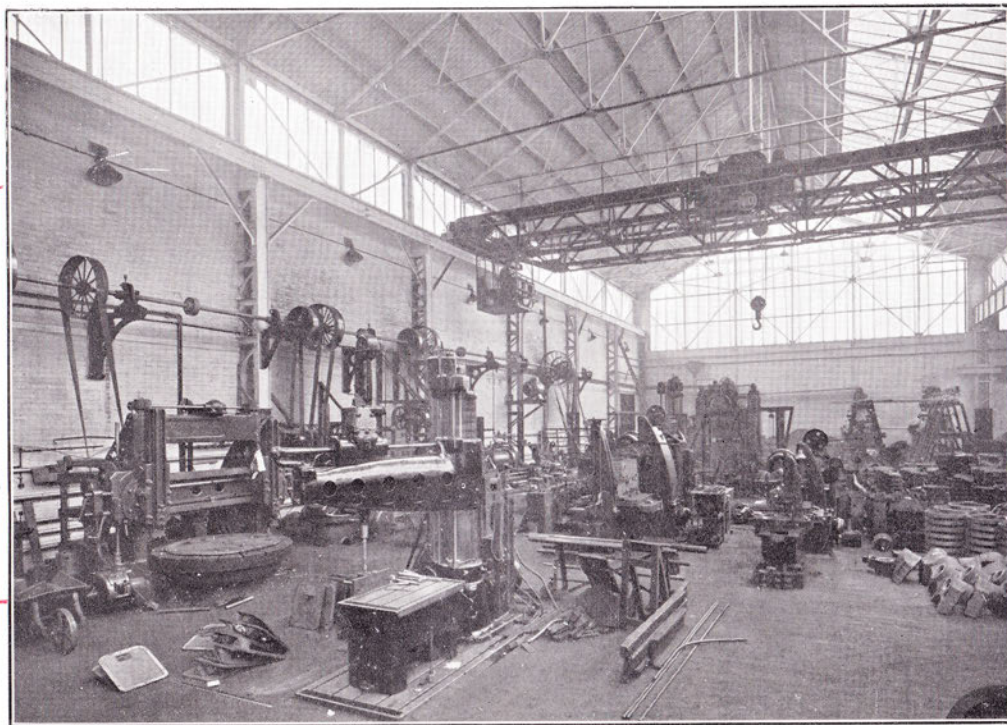




*Part of
Heavy
Casting
Bay.*



*Bay in
Heavy
Machine
Shop.*



*Every year we
spend large
sums of money
on the latest
plant and
machinery,
including
machines
specially
designed for
our purpose.*



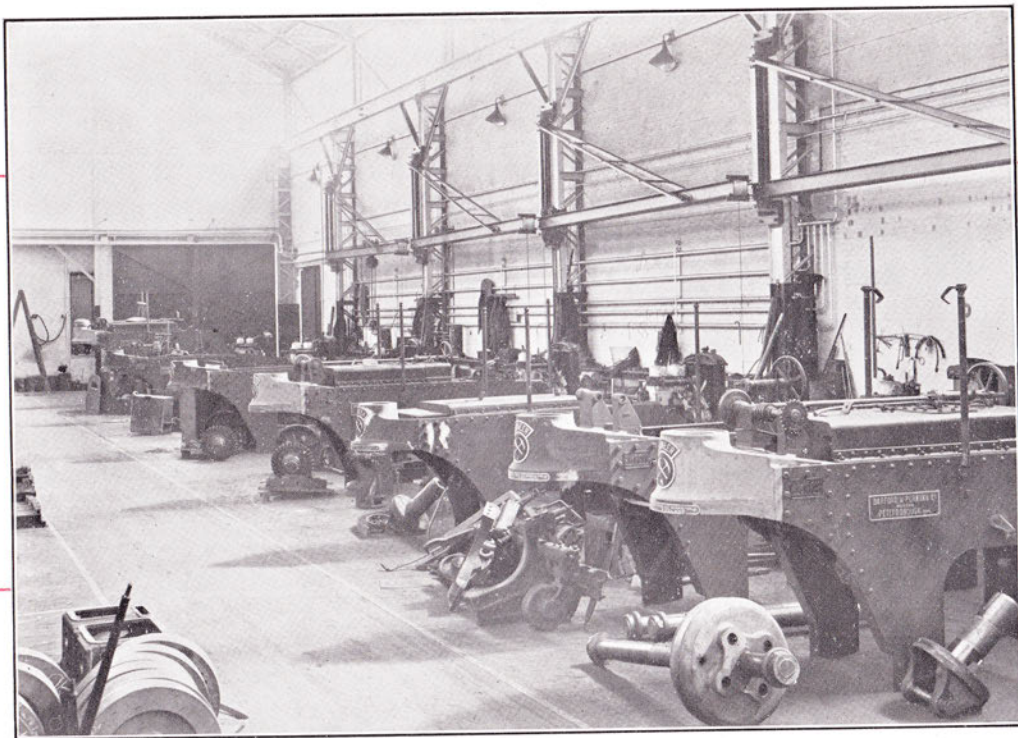
*We claim, in
equipment
and production
methods, we
are ahead of
our competitors
the world over*

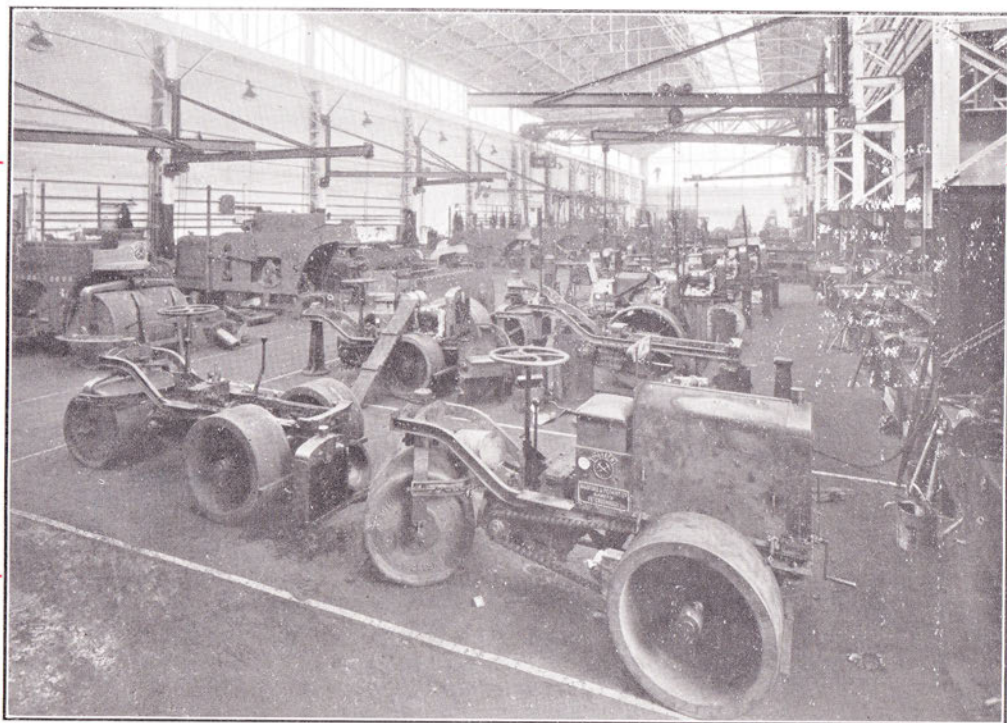


*Machine
Shop*



*Heavy Motor
Rollers in
course of
Erection.*

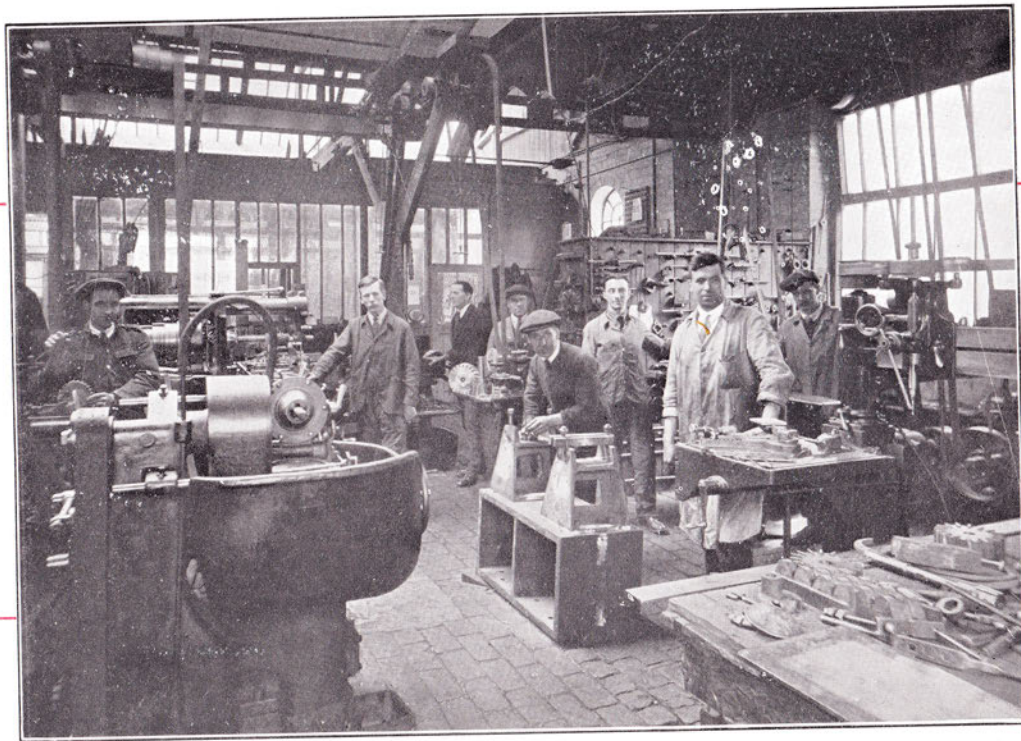


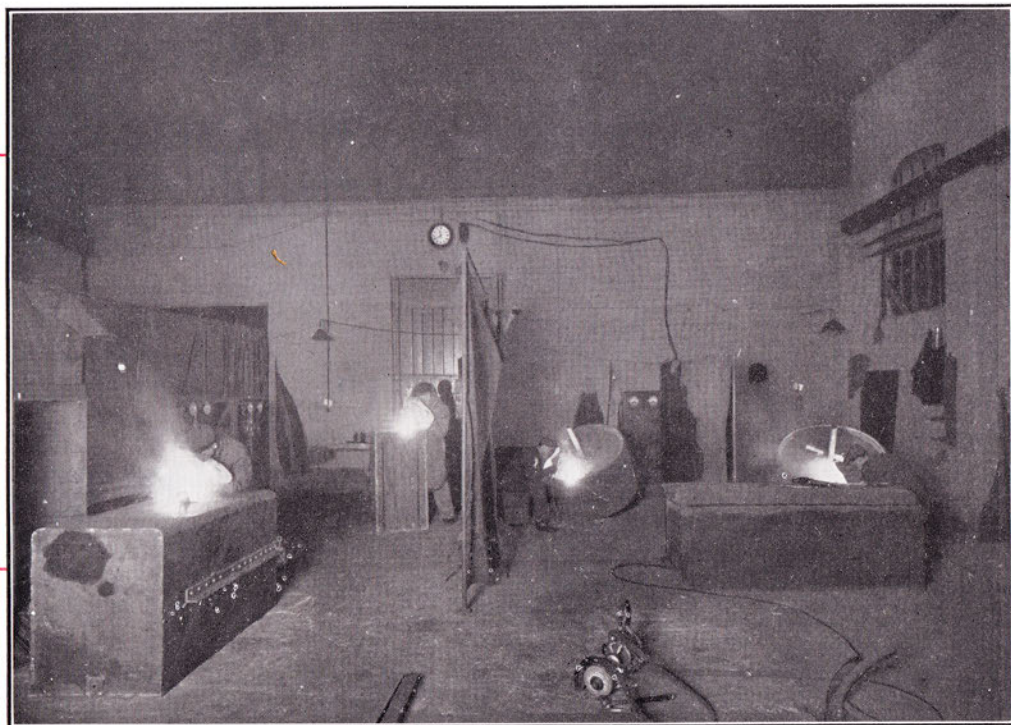


*Motor
Roller
Erecting
Shop.*



*Tool
Room.*

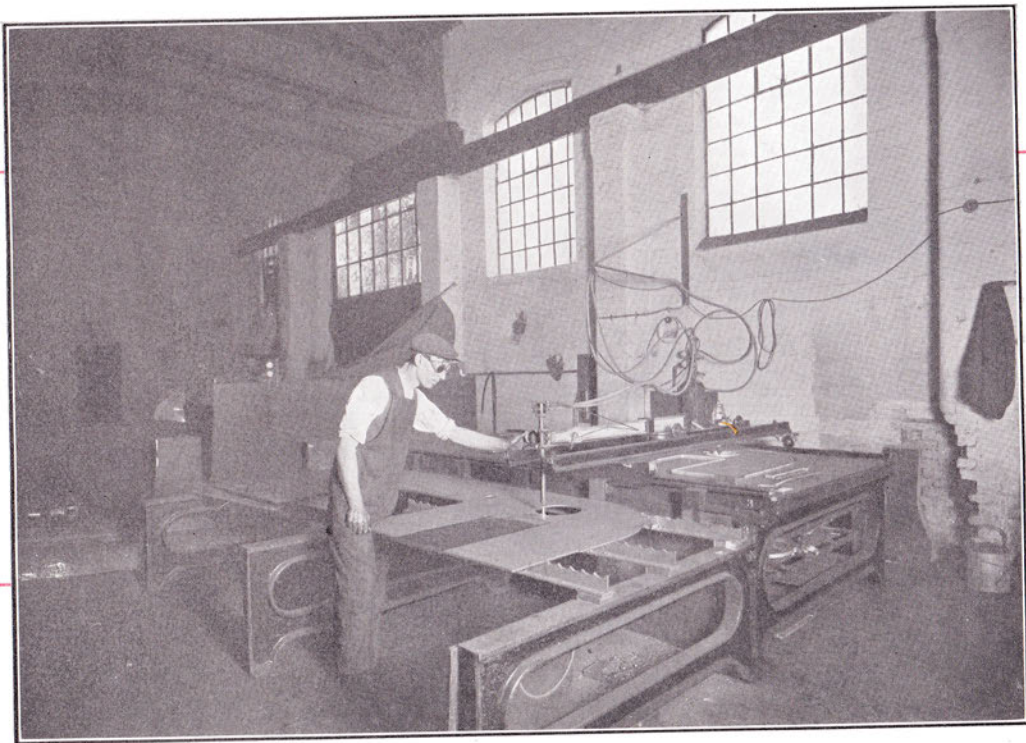


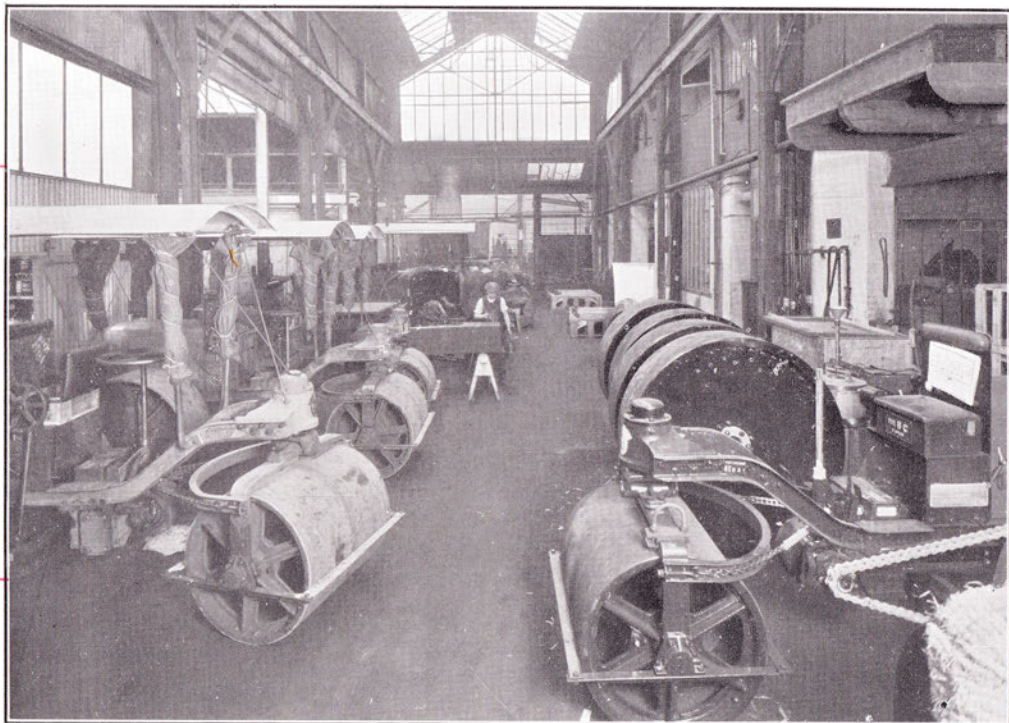


*Part of
Electric
Welding
Plant.*



*Cutting Motor
Roller Side
Plates by
Automatic
Oxy-Acetylene
Flame
Machine.*



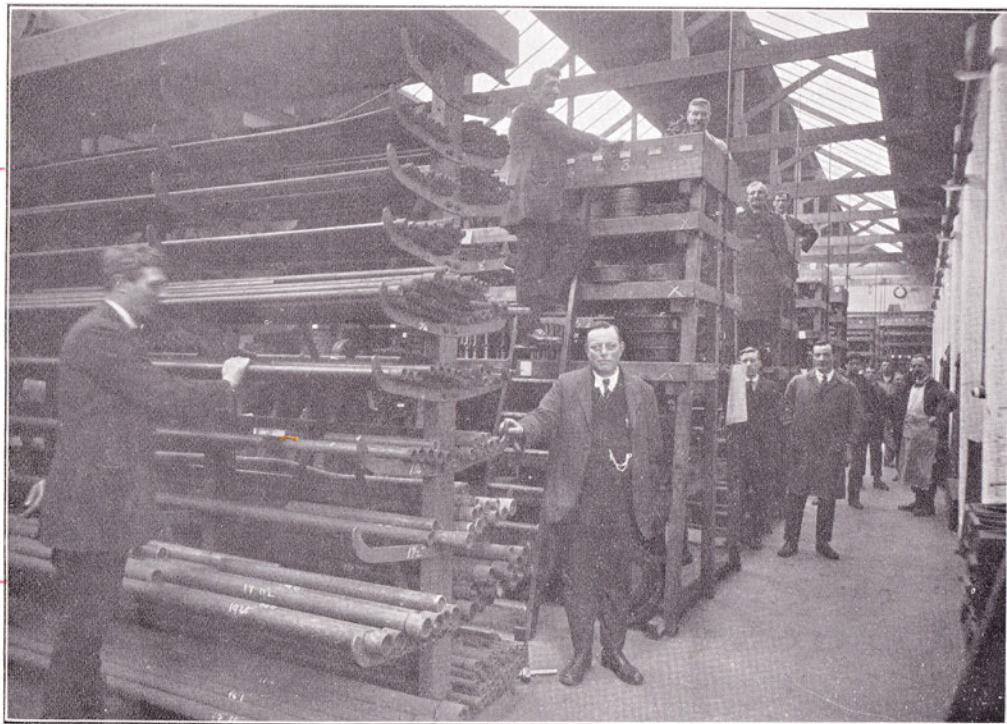


*Paint
Shop.*



*Packing
Department.*





*Finished
Parts
Stores.*



*Employees
at the
Works.*

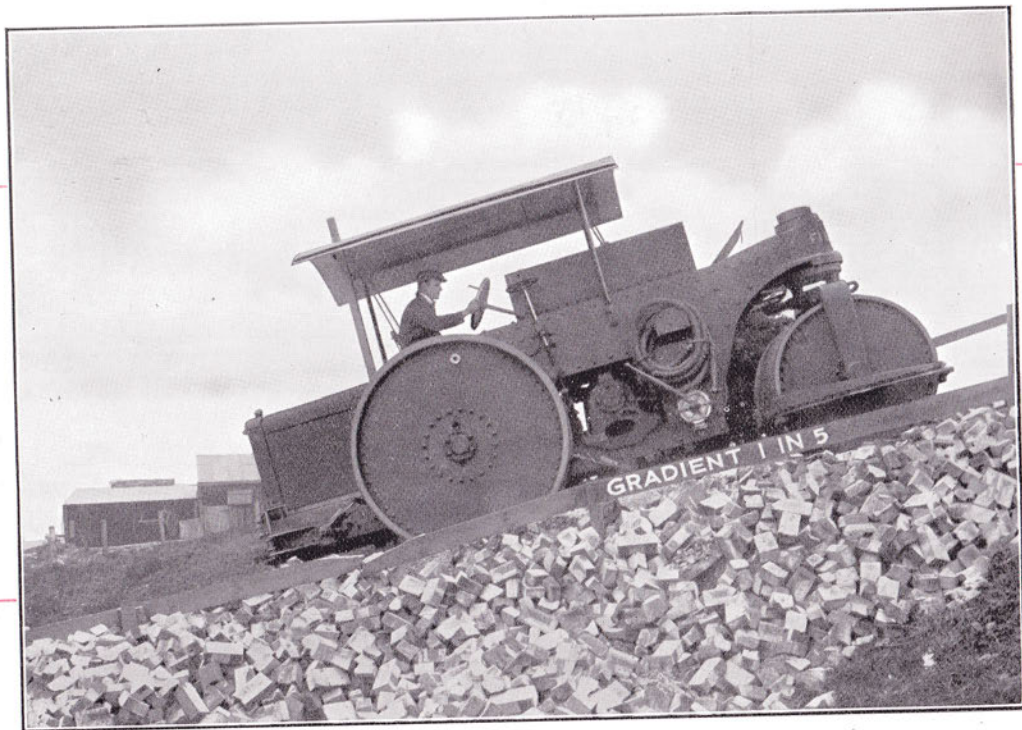


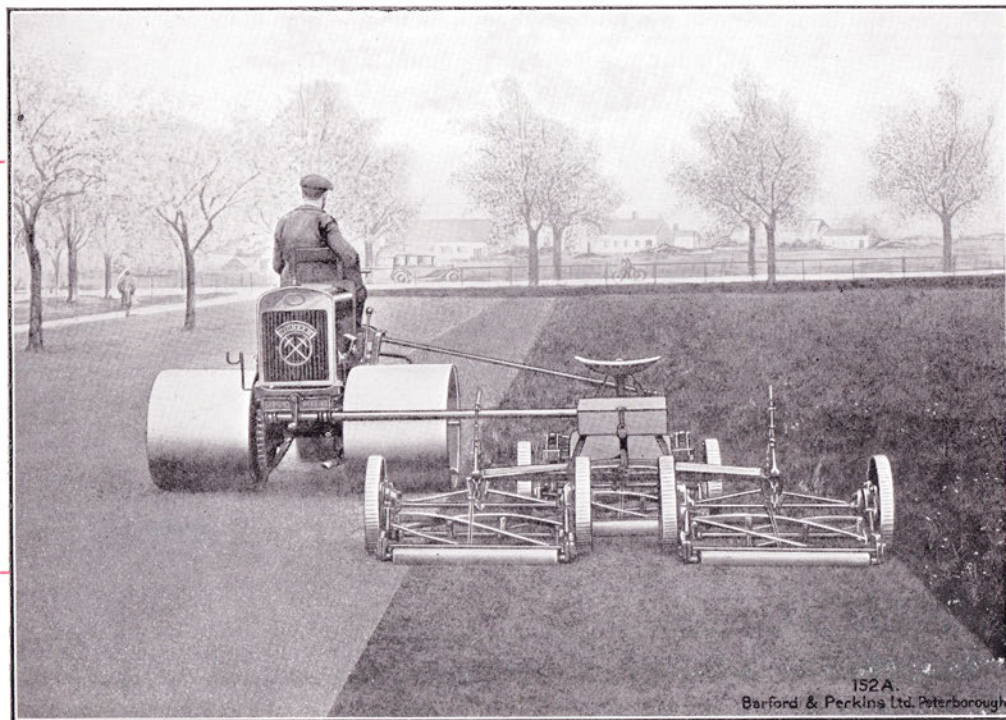


*Motor Roller
Testing
Ground with
Test Hill of
1 in 5 Gradient*



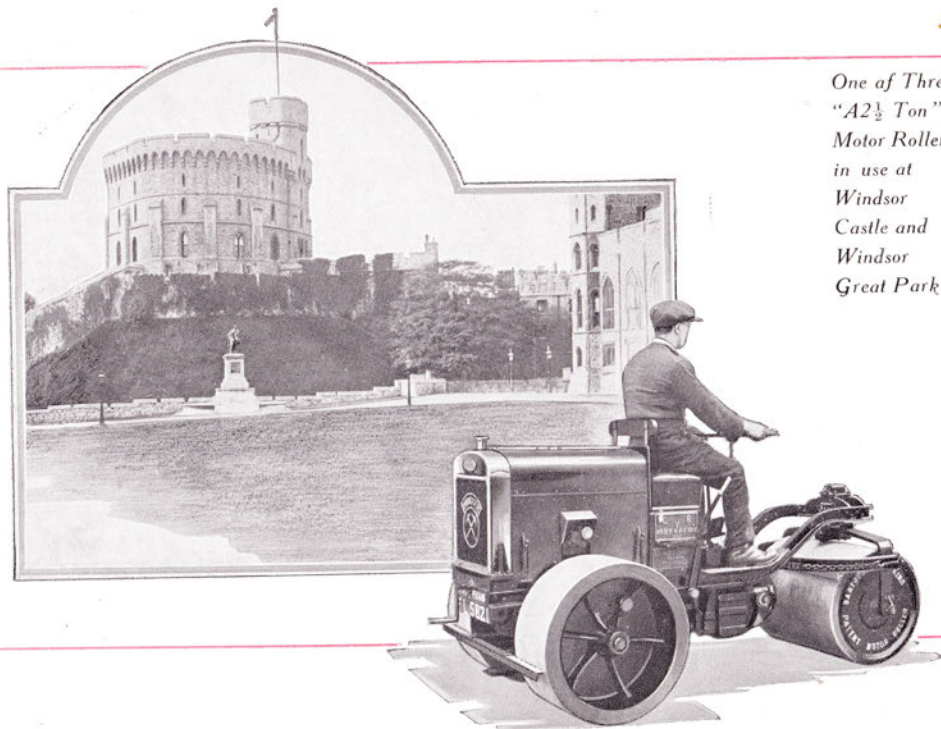
*Diesel
Motor Roller
on Test Hill.
Gradient
1 in 5.*





*"A3" Type
Motor Roller
for Grass
Work
Hauling
Triple
Mower.*

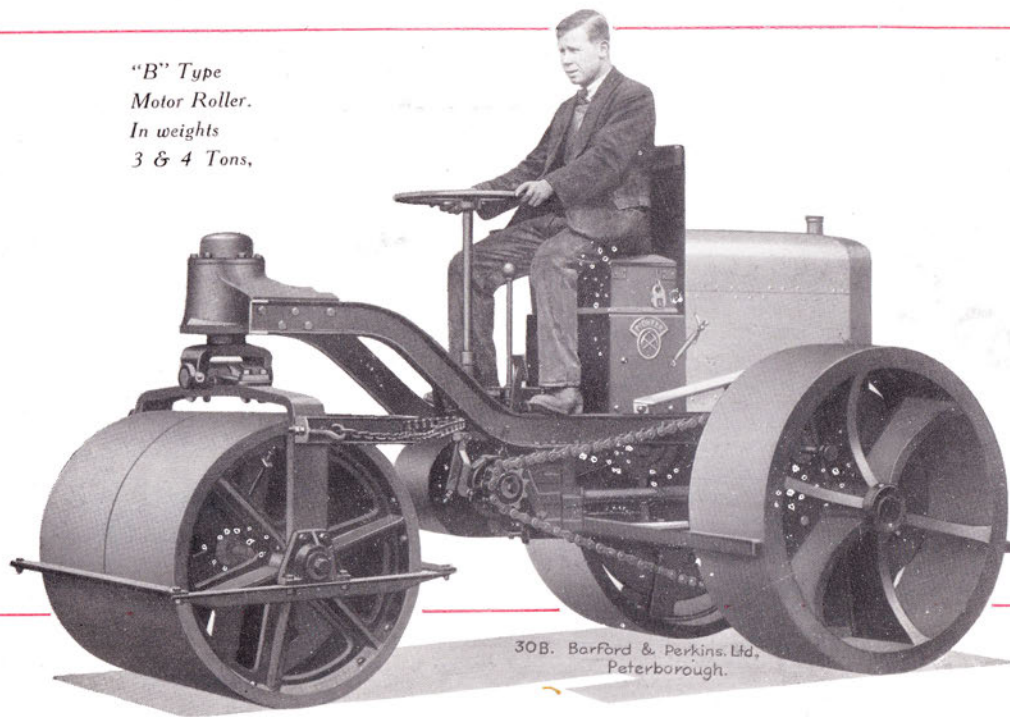




*One of Three
"A2½ Ton"
Motor Rollers
in use at
Windsor
Castle and
Windsor
Great Park.*



*"B" Type
Motor Roller.
In weights
3 & 4 Tons,*





Fleet of "B" Type Motor Rollers on Test Ground (One Order).

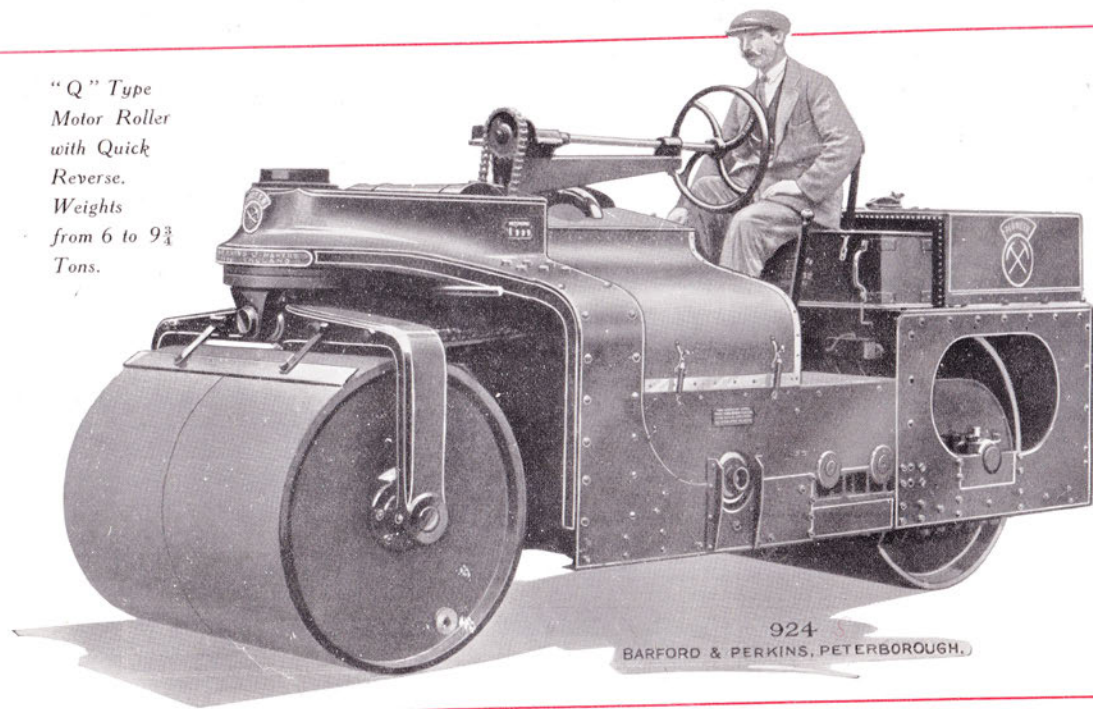




Fleet of "A3" Type Motor Rollers on Test Ground (Part of One Order).



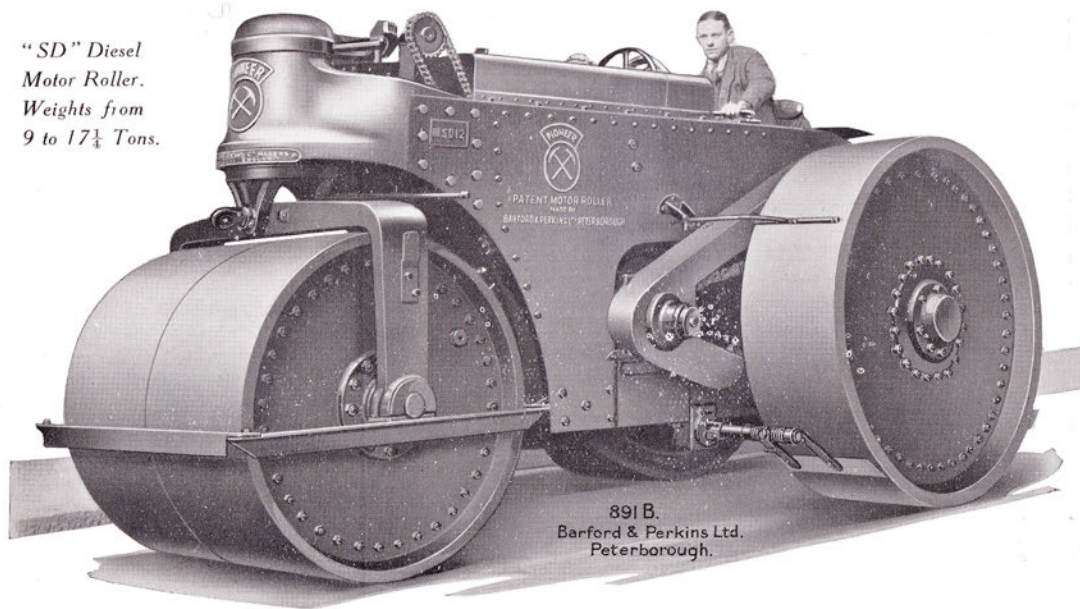
"Q" Type
Motor Roller
with Quick
Reverse.
Weights
from 6 to 9 $\frac{3}{4}$
Tons.



924
BARFORD & PERKINS, PETERBOROUGH.



*"SD" Diesel
Motor Roller.
Weights from
9 to 17½ Tons.*

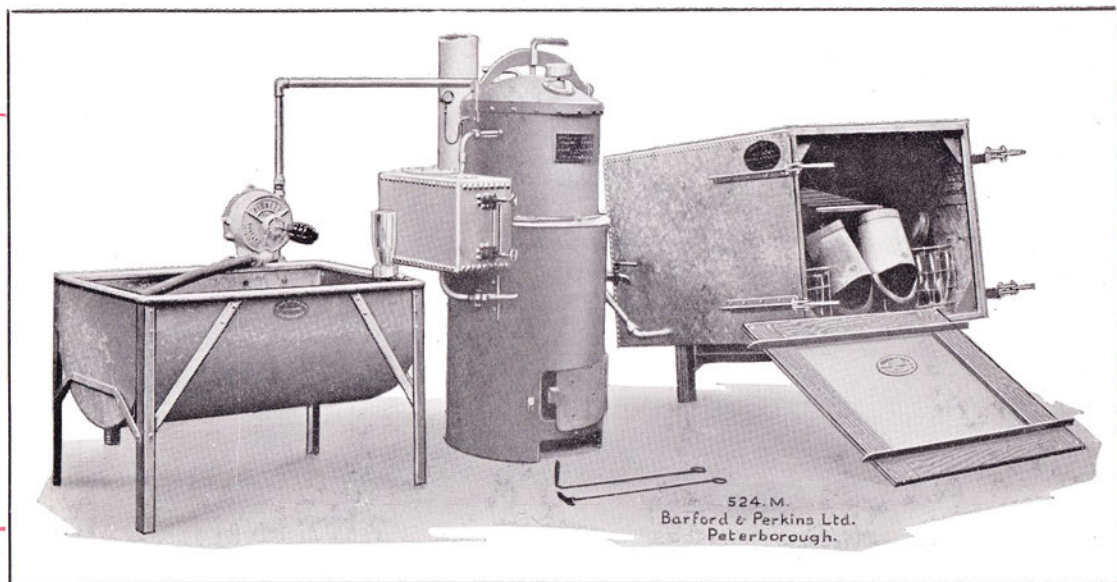


891 B.
Barford & Perkins Ltd.
Peterborough.



*View of
Works
(Foundry
end).*

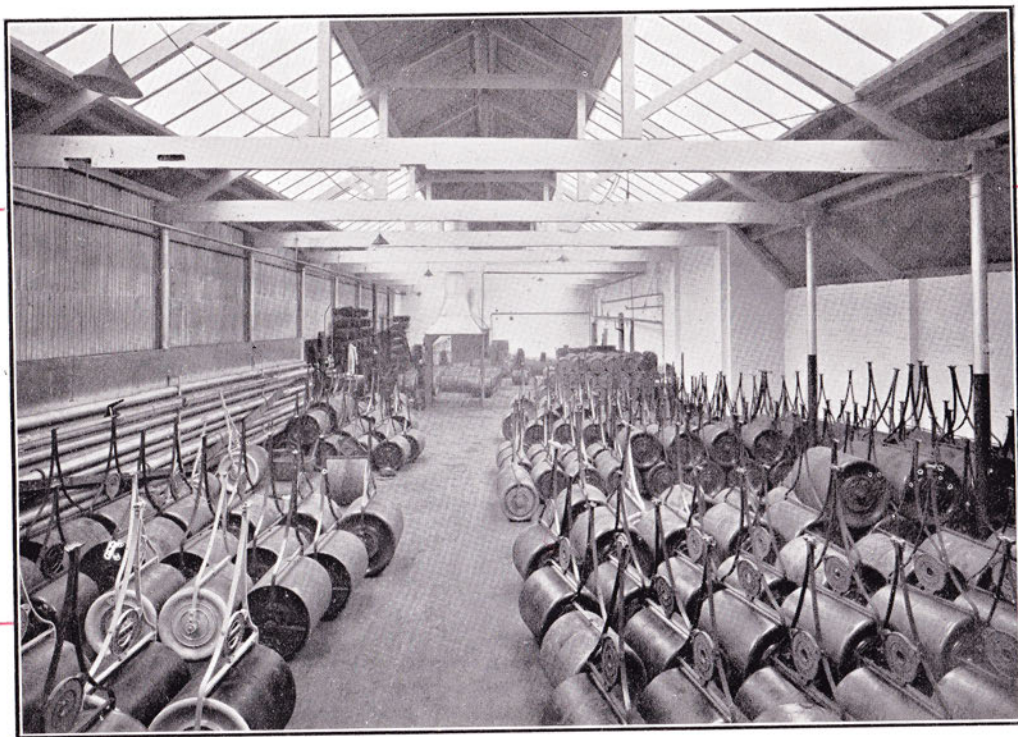


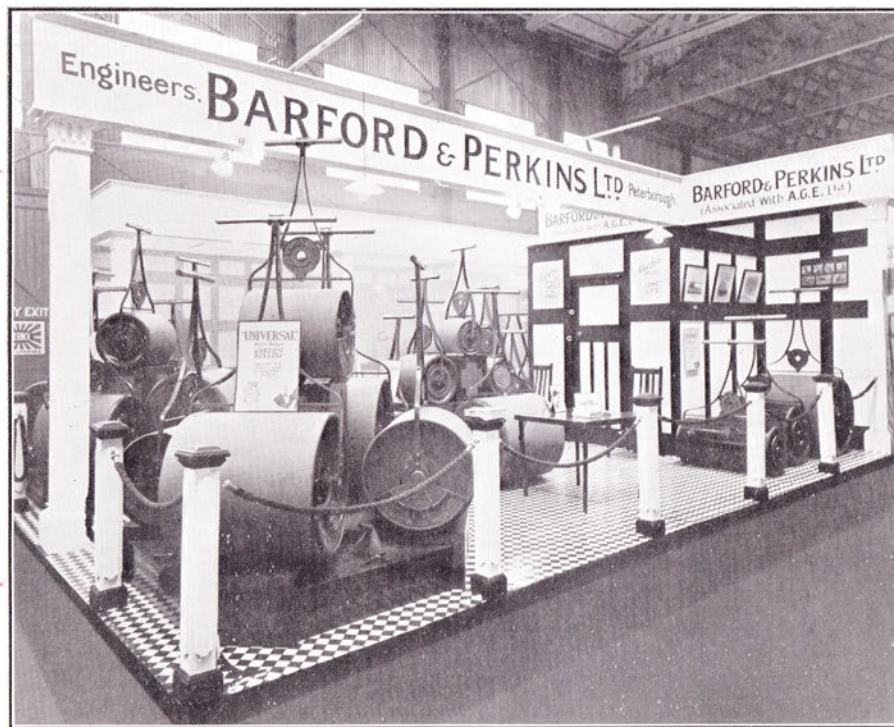


*Barford &
Perkins'
Sterilizing
Outfit for
Clean Milk
Production*



*Garden Roller
Assembly and
Finishing
Shop.*

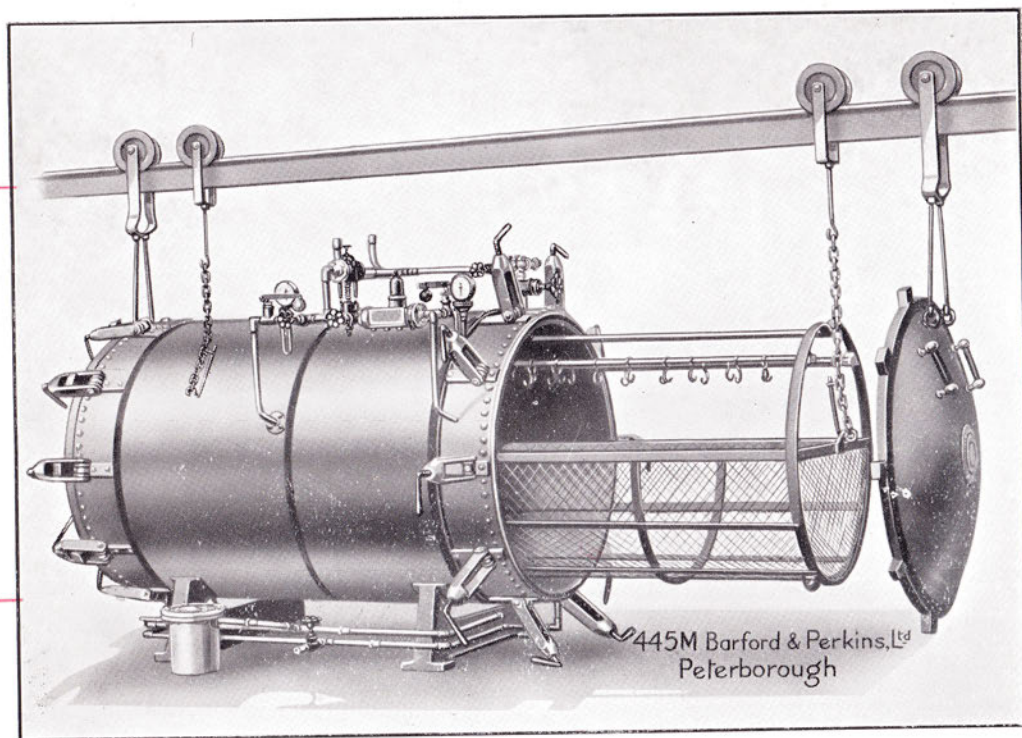




*Barford &
Perkins'
Garden Roller
Stand at the
British
Industries
Fair, 1929.*

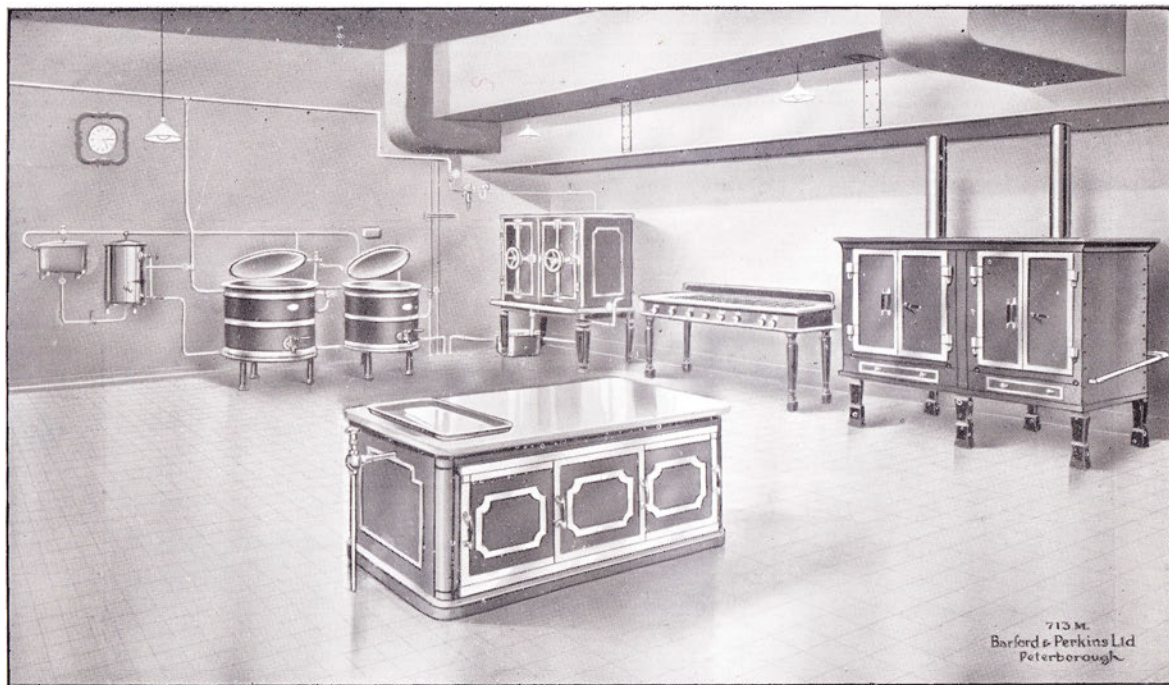


*Barford &
Perkins' Low
Pressure
Steam
Disinfector.*



445M Barford & Perkins, Ltd
Peterborough



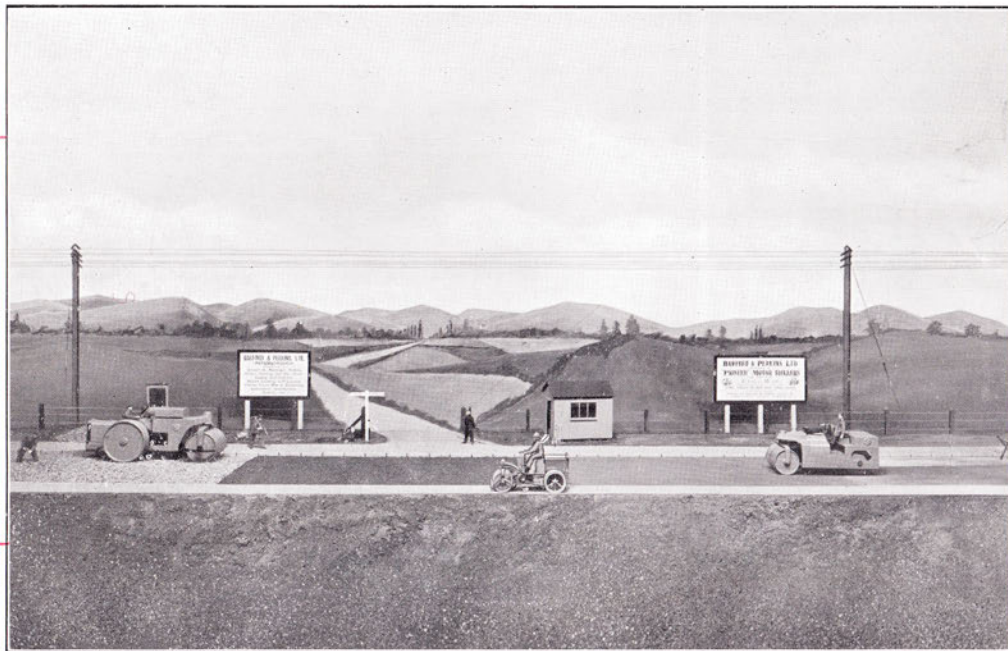


*Kitchen
Installation by
Barford and
Perkins at
Peterborough
War
Memorial
Hospital.*

713 M.
Barford & Perkins Ltd
Peterborough



*Model Road
as at present
displayed in
Show
Window of
Aldwych
House,
London,
W.C.2.*



No. 1017. June, 1930.