

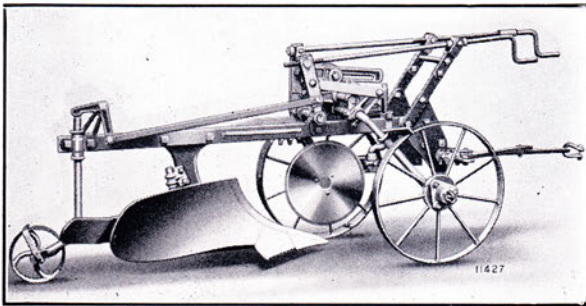
Ransomes

PLOUGHS & IMPLEMENTS

FOR THE MG6 TRACTOR

RANSOMES SIMS & JEFFERIES, LTD., IPSWICH

PLOUGHS



TS42A TRAILED PLOUGH

This plough has long been a favourite with M.G. owners. It will cut furrows 8-in. to 11-in. wide and up to 8-in. deep depending on the type of body and the texture of the soil. The frame is built up of high carbon steel beams and braces, and provides plenty of under beam clearance. Depth and levelling are controlled by adjusting screws within reach of the tractor seat and there is a wide range of adjustment for the drawbar. The plough is lifted by pulling a cord which engages a rack with the pinion on the land wheel; another pull on the cord lowers the plough into work.

- BODY** Choice of RHA, YL, IRDCPT or SHP (see below).
- COULTER.** Disc coulters with 14-in. diameter disc is a standard fitting.
- EXTRAS.** Skim attachment for disc coulters; knife coulters; skim coulters; A tine for subsoiling 3-in. below the furrow bottom can be fitted behind the SHP or RHA body.



RHA. General purpose body with Kristeel (3-ply) mouldboard and cast share.



YL. General purpose body with Kristeel (3-ply) mouldboard and cast chilled share.



SHP. Digging body with Kristeel (3-ply) mouldboard and two-piece cast chilled share.



IRDCPT. Semi-digging body with Kristeel (3-ply) mouldboard and renewable cutter. Takes two-piece cast chilled share.

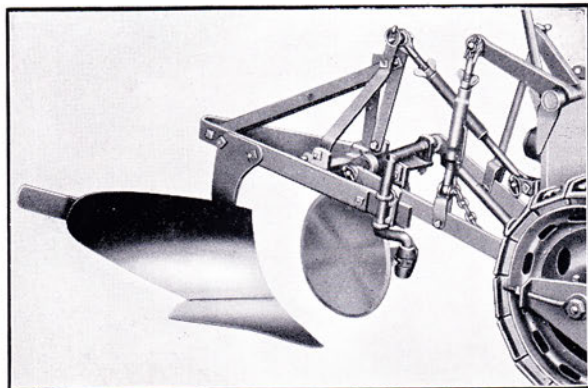
TS 65 MOUNTED PLOUGH

Strength with simplicity is the keynote of this single-furrow all-steel plough. It is extremely compact and is lowered into or raised out of work by the touch of the hydraulic control lever. Constant depth of work is maintained by a wheel which is adjusted by means of a simple vice screw.

BODY. SHP-M (similar to SHP).

COULTER. Single arm disc coulters with 14-in. steel disc running on oil impregnated bearings. Adjustable for depth and width.

EXTRAS. Skim coulters.



TS 66 MOUNTED PLOUGH

This left hand plough, used in conjunction with the TS 65, makes possible effective one-way ploughing, thereby obviating deep finishing furrows and providing a perfectly level seed bed.

BODY. SHP-M.

COULTER. Single arm disc coulters with 14-in. steel disc.

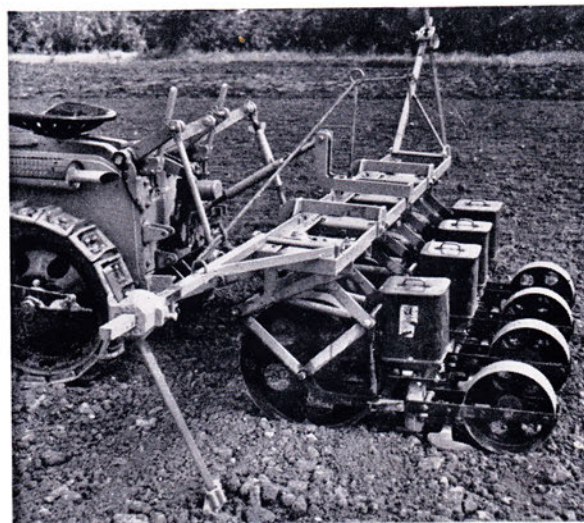
EXTRAS. Skim coulters.



SEEDER M11

This is designed for economical and accurate seeding with tractors fitted with hydraulic lift. Up to five seeder units can be attached to the frame to suit varying row spacings from 12-in. upwards. Four seed discs cater for all requirements from the smallest seeds up to peas and French beans.

The drill is opened by the coulters, which is adjustable for depth, and the soil is returned by seed covers and consolidated by the rear wheel. The agitator is driven through bevel gearing from the front wheel.



REAR TOOLBARS

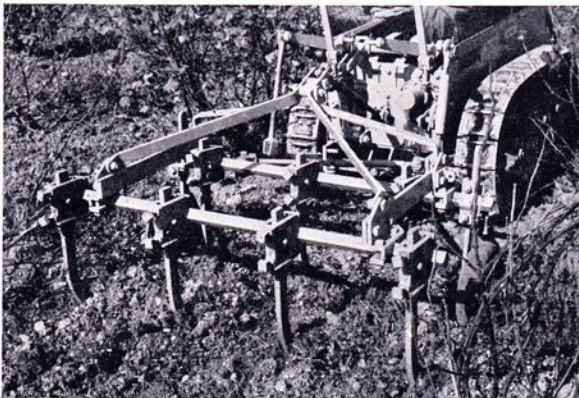


C67 toolbar working with tractor fitted with hydraulic lift

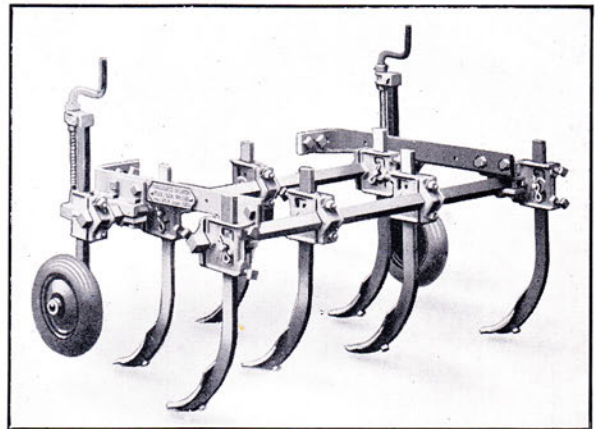
C 29 and C 67

These toolbars are ideal for accurate and economical general and inter-row cultivation. The C.29 model is supplied for tractors with manual lift and the C.67 is for tractors fitted with hydraulic lift.

The frame is fitted with square section tine bars 4-ft. long. Alternative bars, 5-ft. 2-ins. or 7-ft. 6-ins. are available for light hoeing. Depth of cultivation is controlled by two depth gauge wheels. Sets of tools, all quickly interchangeable and adjustable to suit varying widths of rows, are available for the following operations.



C67 toolbar with solid steel tines



C29 toolbar for tractors with manual lift

CULTIVATING

For general and inter-row cultivation, seven solid steel tines are supplied, although taper spring tines—recommended for hard, stony land—are also available. Steel reversible points $2\frac{1}{4}$ -in. wide are standard, but other points and shares are available (See page 5).

For use in Jersey a set of 9 cultivating tines DR6535 with reversible points PSF 141 ($1\frac{1}{2}$ -in. wide) is supplied as standard.



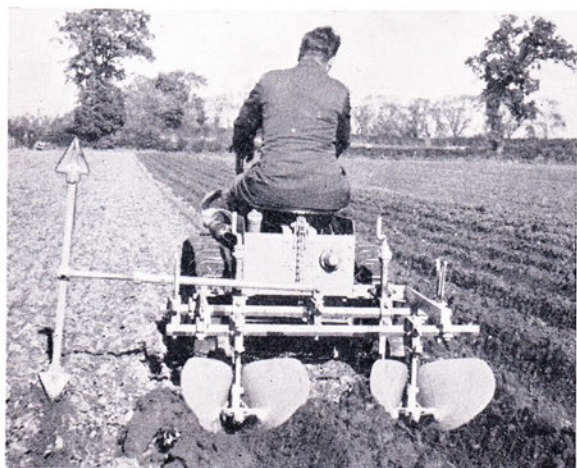
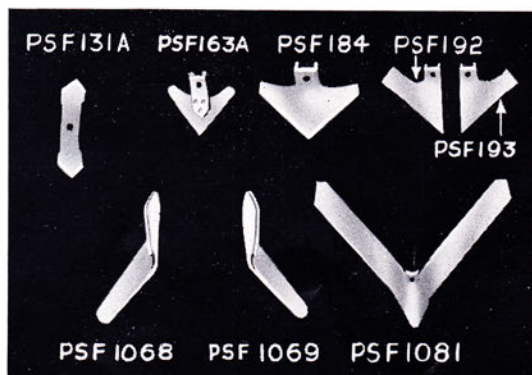
C67 toolbar fitted with sweeps

HOEING

On the standard tine bars, there is room for fitting three pairs of right-hand and left-hand hoes and stalks. These "L" hoes are supplied 7-in. or 9-in. wide. Centre type "A" hoes are also available. For clearing and aerating strawberry beds a pair of sweeps 18-in. wide with special stalks can be fitted.

POINTS, HOES, etc.

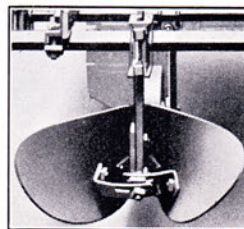
PSF 131A * Point	- 2 $\frac{1}{4}$ "	PSF 192	} Side shares 8"
PSF 163A Flat centre hoe	9"	PSF 193	
PSF 169 Crowned steel shares	5 $\frac{1}{4}$ "	†PSF 1056	} Beet hoes 9"
		†PSF 1057	
PSF 170 ditto	- 7 $\frac{1}{2}$ "	†PSF 1068	} Beet hoes 7"
PSF 184 ditto	- 9"	†PSF 1069	
PSF 185 ditto	- 10"	†PSF 1081 Sweep	18"
* Reversible.		† Special stalks required.	

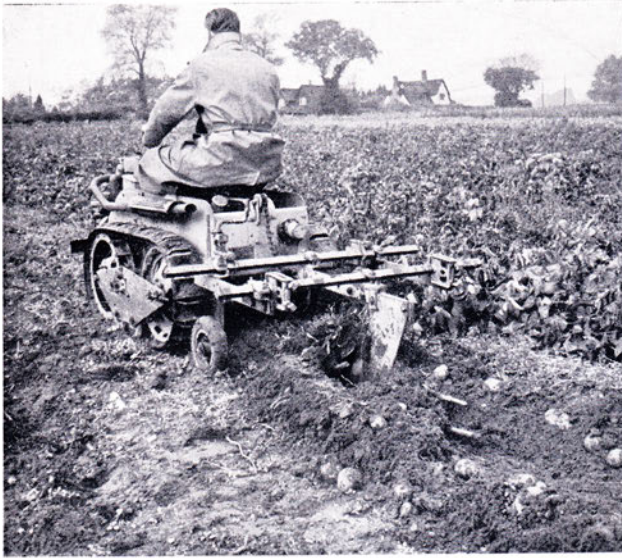


C29 with ridging bodies

RIDGING

For ridging and earthing up, two bodies can be fitted. The mouldboards are adjustable for ridges from 17-in. to 24-in. wide. A marker attachment is available. Stabilising discs can be supplied and are recommended for use when splitting the ridges.

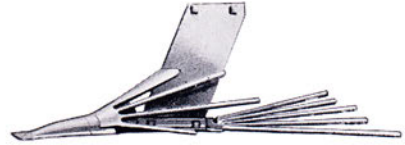




C29 toolbar with potato lifting body

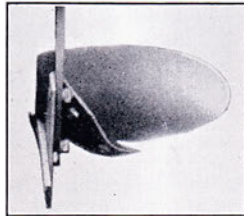
POTATO LIFTING

For this operation, a body with a double set of prongs can be fitted. The prongs raise the potatoes to the surface without bruising, leaving them in convenient rows for collection.



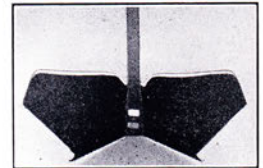
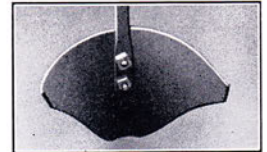
ON & OFF PLOUGHING

For moving earth up to and away from raspberries etc., small right-hand and left-hand bodies can be fitted to the rear tine bar. Disc coulters are available as extras.



FURROWING & BANKING

A maximum of three bodies working to a depth of 4-in. to 5-in. can be fitted to the rear tine bar. Furrowing bodies are 7-in. 10-in. or 12-in. wide. Banking bodies are 11-in. wide.



THIS PUBLICATION describes equipment of our own manufacture

OTHER MANUFACTURERS offer equipment designed specially for use with the MG tractor including :—

LAND ROLLS

ROTAVATORS

SAW BENCHES

AIR COMPRESSORS

DRAG HARROWS

SPRAYERS

HEDGE CUTTERS

HAMMER MILLS

STEERAGE HOES

MOWERS

TRAILERS

WATER PUMPS, etc.

Full particulars of any of the above equipment will be sent on application.

FRONT TOOLBARS

C70 and C71

Fitted to the front of the tractor, these toolbars are supplied in two models—the C71 for tractors with manual lift, and the C70 for tractors fitted with hydraulic lift. The manœuvrability of the tractor, coupled with the fact that the driver has a clear view of the work ahead, enables really close and accurate cultivation to be carried out between the rows. The frame is free to float and a constant depth of work is maintained by the front wheels. The tines can be spaced to suit varying widths of rows and are adjustable for depth.



The manually operated C71 at work

For light cultivating, the usual fitting is with eleven tines with points 5-in. wide. For hoeing, four pairs of right and left-hand "L" hoes 6-in. wide are fitted. A pair of hoes is fitted to the rear of the tractor to remove track marks.



DISC HARROW

HR 4

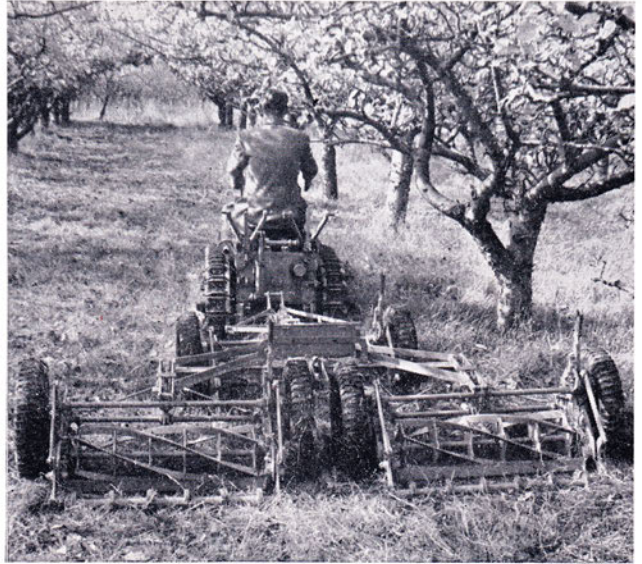
Suitable for tractors with or without hydraulic lift, this trailed harrow will deal with all discing work in preparing seed beds. The 16-in. diameter discs are made of specially tempered steel and are assembled on solid steel axles mounted in brackets fitted with seasoned oil-soaked wood bearings. The cutting angle of the discs can be varied by means of a screw operated from the tractor seat.

The harrow is 3-ft. wide and the discs are spaced 6-in. apart. Each of the twelve discs is provided with a scraper and a tine is fitted to ensure that no uncultivated strip is left between the gangs. Transport wheels are provided.

GANG MOWER

This provides an efficient and economical means of keeping large areas of grass under control. The mower is designed to stand up to the toughest jobs and will be found particularly useful for orchard work, dealing with heavy growths up to 12-in. long. The 10-in. diameter cutting cylinder runs on ball bearings in dust proof housings, and the driving gears are enclosed in an oil bath. The five heavy-duty cutting knives and the bottom blade are made of finest Sheffield steel.

The large diameter pressed steel wheels are fitted with renewable rim studs, but pneumatic tyred wheels can be supplied at an extra charge. The mower can be supplied with one cutting unit 30-in. wide, or with three cutting units giving a total cut of 7-ft.



RAMDOZER

This attachment converts your M.G. into a practical bulldozer and solves the problem of dealing with the lighter type of work for which a larger bulldozer would be unsuitable and uneconomical. It is ideal for levelling, back filling trenches, snow clearing, making paths and roads, and for all kinds of load shifting.

The frame is made of stout channel section steel. The 48-in. blade is fitted with a renewable cutting edge and can be angled 30° to the right or left. Capacity is approximately $\frac{1}{4}$ cubic yard. The Ramdozer can be supplied for use with tractors fitted with manual lift or hydraulic lift.

Production of the hydraulically operated model has not yet started. No delivery date can be given.

RANSOMES SIMS & JEFFERIES, LTD., IPSWICH
